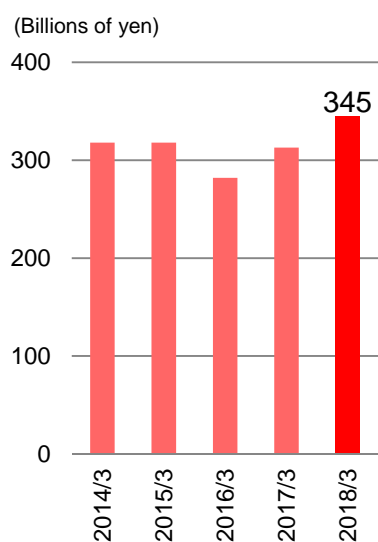


Financial Highlights

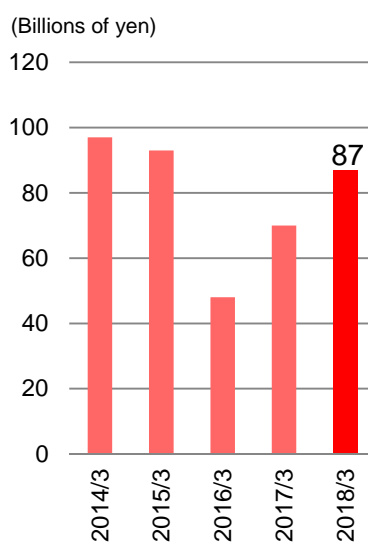


	Mar-14	Mar-15	Mar-16	Mar-17	Mar-18
Operating results (Millions of yen)					
Operating revenue	333,430	332,615	297,929	334,458	376,016
Net operating revenue	318,570	318,365	282,010	313,470	345,223
Operating income	96,675	89,174	46,981	69,051	84,890
Ordinary income	97,188	93,278	48,313	70,551	87,497
Net income	61,463	62,557	33,117	39,433	57,754
Financial condition (Millions of yen)					
Total assets	7,125,577	9,231,812	10,346,228	11,536,937	10,551,876
Net assets	574,505	647,960	670,500	512,638	782,473
Equity ratio	8.2%	7.1%	6.7%	4.7%	7.7%
Regulatory capital adequacy ratio	482.3%	478.3%	395.9%	330.8%	446.5%

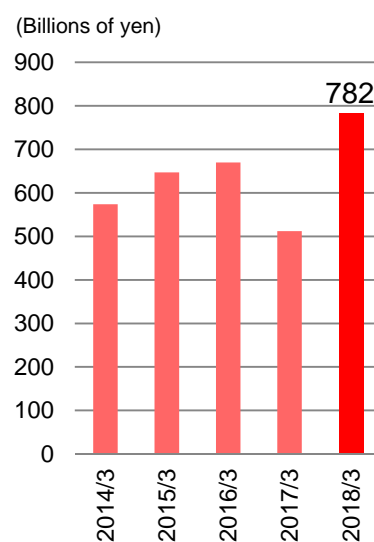
Net operating revenue



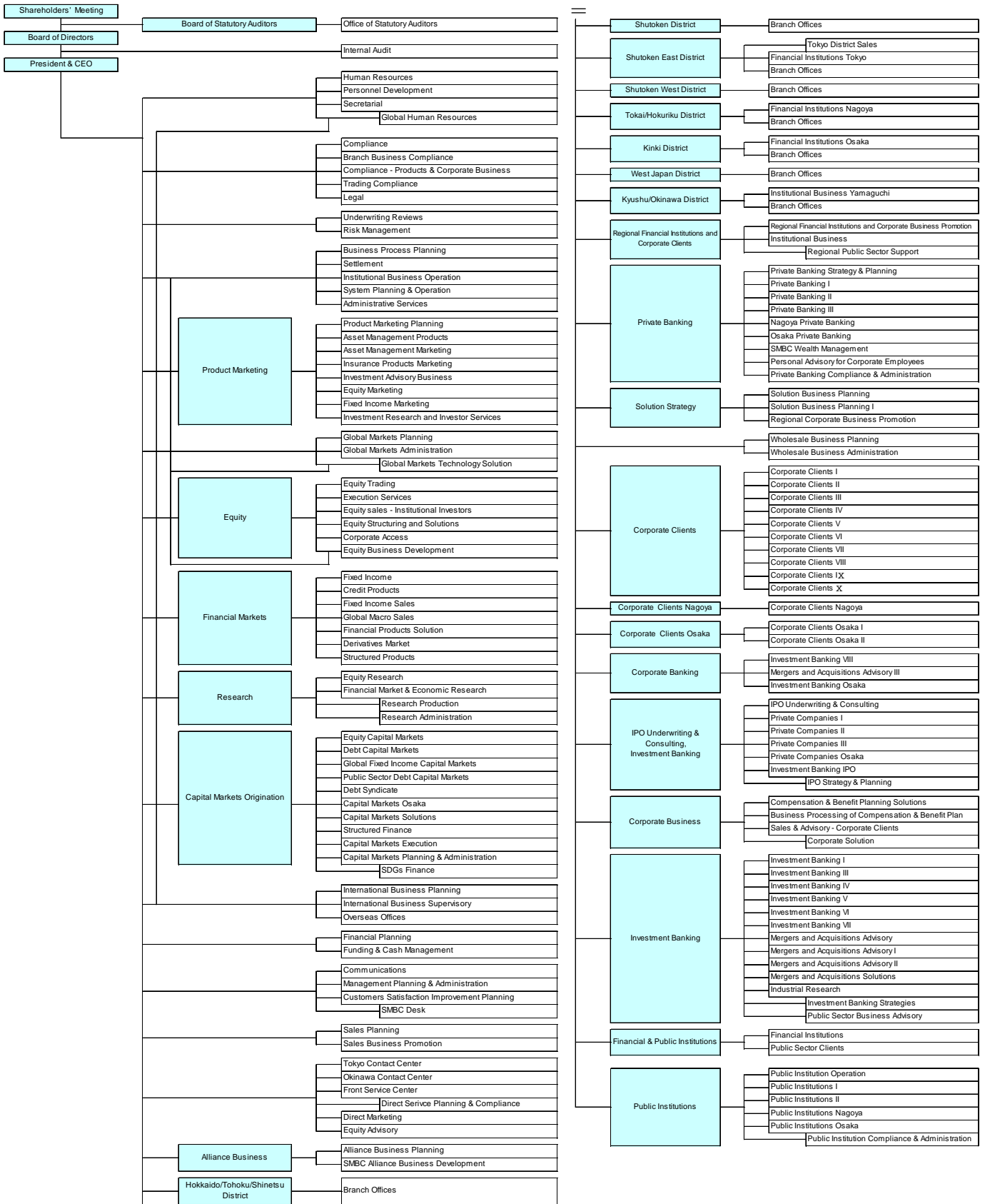
Ordinary income



Net assets



Organization



(As of September 12, 2018)

●Sales Division

[Tokyo]

Main Branch
Kabuto-cho Branch
Ginza Branch
Yaesu Branch
Otemachi Branch
Toranomom Branch
Akasaka Branch
Kamata Branch
Denenchofu Branch
Gotanda Branch
Shibuya Branch
Jiyugaoka Branch
Karasuyama Branch
Shimokitazawa Branch
Tamagawa Branch
Shinjuku Branch
Shinjuku-Higashiguchi Branch
Kojimachi Branch
Nakano Branch
Oizumi Branch
Kichijoji Branch
Hamadayama Branch
Ogikubo Branch
Chofu Branch
Koganei Branch
Tachikawa Branch
Hachioji Branch
Machida Branch
Nagayama Branch
Ikebukuro Branch
Ikebukuro-Nishiguchi Branch
Akabane Branch
Ueno Branch
Kinshi-cho Branch
Shinkoiwa Branch
Kitasenju Branch

[Kanto]

Utsunomiya Branch
Tochigi Branch
Ota Branch
Maebashi Branch
Takasaki Branch
Mito Branch
Urawa Branch
Omiya Branch
Kawagoe Branch
Tokorozawa Branch
Honjo Fukaya Branch
Matsudo Branch
Kashiwa Branch
Tsudanuma Branch
Funabashi Branch
Motoyawata Branch
Chiba Branch
Kisarazu Branch
Kawasaki Branch
Shinyurigaoka Branch
Mizonokuchi Branch
Yokohama Branch
Totsuka Branch
Kamiohoka Branch
Aobadai Branch
Fujisawa Branch
Kamakura Branch
Atsugi Branch
Odawara Branch

[Hokkaido and Tohoku]

Asahikawa Branch
Sapporo Branch
Obihiro Branch
Aomori Branch
Hachinohe Branch
Hirosaki Branch
Morioka Branch
Akita Branch
Sendai Branch
Yamagata Branch
Fukushima Branch

[Koshinetsu and Hokuriku]

Niigata Branch
Nagano Branch
Matsumoto Branch
Kofu Branch
Fujiyoshida Branch
Toyama Branch
Takaoka Branch
Kanazawa Branch
Fukui Branch

[Chubu]

Numazu Branch
Shizuoka Branch
Hamamatsu Branch
Iwata Branch
Toyohashi Branch
Okazaki Branch
Nagoya Branch
Nagoya-Chuo Branch
Nagoya-ekimae Branch
Gifu Branch
Yokkaichi Branch

[Kansai]

Otsu Branch
Kyoto Branch
Osaka Branch
Umeda Branch
Kyobashi Branch
Bingomachi Branch
Joto Branch
Toyonaka Branch
Senri-chuo Branch
Moriguchi Branch
Namba Branch
Kosaka Branch
Abeno Harukas Branch
Sakai Branch
Otori Branch
Hirakata Branch
Kori Branch
Takatsuki Branch
Ibaraki Branch
Yao Branch
Kishiwada Branch
Wakayama Branch
Nara Branch
Gakuenmae Branch
Nishinomiya Branch
Ashiya Branch
Itami Branch
Kobe Branch
Kobe-Chuo Branch
Sannomiya Branch
Akashi Branch
Kawanishi Branch
Miki Branch
Himeji Branch

[Chugoku]

Okayama Branch
Fukuyama Branch
Hiroshima Branch
Yonago Branch

[Shikoku]

Takamatsu Branch
Tokushima Branch
Matsuyama Branch
Kochi Branch

[Kyushu and Okinawa]

KitaKyushu Branch
Fukuoka Branch
Saga Branch
Nagasaki Branch
Oita Branch
Nakatsu Branch
Miyazaki Branch
Kumamoto Branch
Kagoshima Branch
Naha Branch

Tokyo District Sales
Financial Institutions Tokyo
Financial Institutions Nagoya
Financial Institutions Osaka
Institutional Business Yamaguchi

●Public Institutions

Public Institutions I
Public Institutions II
Public Institutions Nagoya
Public Institutions Osaka

●Private Banking

Personal Advisory for Corporate Employees
•Tokyo
•Nagoya
•Osaka

●Corporate Clients

Corporate Clients I
Corporate Clients II
Corporate Clients III
Corporate Clients IV
Corporate Clients V
Corporate Clients VI
Corporate Clients VII
Corporate Clients VIII
Corporate Clients IX
Corporate Clients X

●IPO Underwriting & Consulting

Private Companies I
Private Companies II Tokyo
Private Companies II Nagoya
Private Companies II Osaka

●Corporate Clients Nagoya

Corporate Clients Nagoya

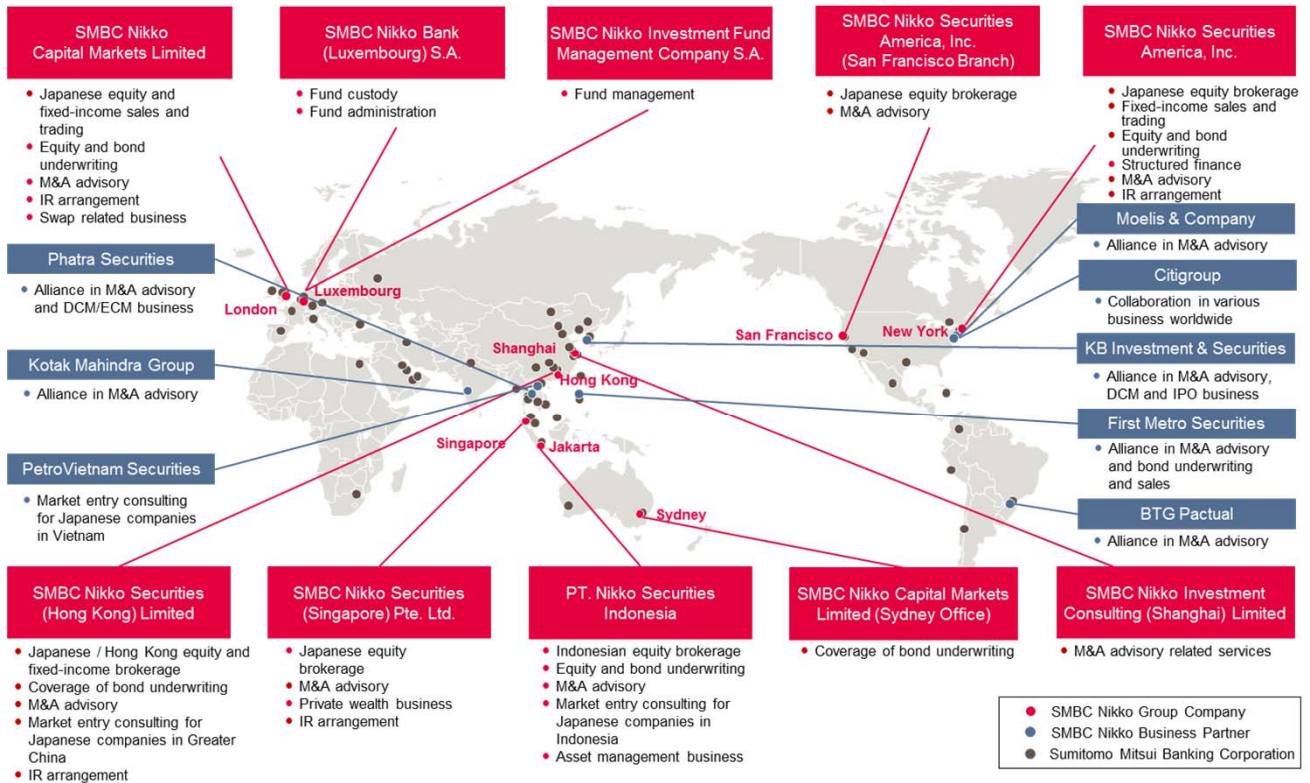
●Corporate Clients Osaka

Corporate Clients Osaka I
Corporate Clients Osaka II

●Financial & Public Institutions

Financial Institutions
Public Sector Clients

Overseas Network



* Note: SMBC Nikko Capital Markets and SMBC Nikko Securities America are SMBC Nikko's affiliated companies.

London

SMBC Nikko Capital Markets Limited*
One New Change London EC4M 9AF U.K.
TEL. 44-20-3527-7000

Sydney Office*

Level 35, The Chifley Tower, 2 Chifley Square,
Sydney, NSW 2000, Australia
TEL. 612-9376-1895

* A subsidiary of Sumitomo Mitsui Banking Corporation (SMBC Nikko Capital Markets Limited will provide services based on the Master Business Coordination Agreement with SMBC Nikko Securities Inc.)

New York

SMBC Nikko Securities America, Inc.*
277 Park Avenue, New York, NY 10172, U.S.A.
TEL. 1-212-224-5300

San Francisco Branch*

555 California Street, Suite 3320, San Francisco,
CA 94104, U.S.A.
TEL. 1-415-616-3070

* A subsidiary of Sumitomo Mitsui Banking Corporation (SMBC Nikko Securities America, Inc. will provide services based on the Master Business Coordination Agreement with SMBC Nikko Securities Inc.)

Hong Kong

SMBC Nikko Securities (Hong Kong) Limited
2501-05 25/F, Champion Tower, No.3 Garden Road,
Central, Hong Kong
TEL. 852-2842-1111

Singapore

SMBC Nikko Securities (Singapore) Pte. Ltd.
3 Temasek Avenue #22-01 Centennial Tower
Singapore 039190
TEL. 65-6690-4411

Shanghai

SMBC Nikko Investment Consulting (Shanghai) Limited
Room 1720, Shanghai World Financial Center,
No.100 Century Avenue, Pudong New Area, Shanghai,
The People's Republic of China
TEL. 86-21-3817-9000

Luxembourg

SMBC Nikko Bank (Luxembourg) S.A.
2, rue Hildegard von Bingen L-1282 Luxembourg
TEL. 352-442-828-1

Indonesia

P.T. Nikko Securities Indonesia
Wisma Indocement, 3rd Floor
JL., Jenderal Sudirman Kav. 70-71,
Jakarta 12910, Indonesia
TEL. 62-21-251-0125

Nikko Systems Solutions, Ltd.

12-1, Daito-cho, Tsurumi-ku, Yokohama, Kanagawa, 230-0032,
Japan

TEL. 81-45-506-8811

Nikko Business Systems Co., Ltd.

Fukagawa Gatharia West I Building,
1-5-55, Kiba, Koto-ku, Tokyo, 135-8532, Japan

TEL. 81-3-5857-9200

Nikko Research Center, Inc.

Kabuto-cho Nikko Building II,
8-1, Nihonbashi Kabuto-cho, Chuo-ku, Tokyo, 103-0026, Japan

TEL. 81-3-5644-1600

Nikko Investor Relations Co., Ltd.

4F, Kaisei Building,
13-2, Nihonbashi Kabuto-cho, Chuo-ku, Tokyo, 103-0026, Japan

TEL. 81-3-3660-2100

Nikko Enterprise Co., Ltd.

Kabuto-cho Nikko Building II,
8-1, Nihonbashi Kabuto-cho, Chuo-ku, Tokyo, 103-0026, Japan

TEL. 81-3-5623-8300

Nikko Properties Corporation

21F, Nihonbashi Takashimaya Mitsui Bldg,
5-1, Nihonbashi 2-chome, Chuo-ku, Tokyo, 103-6121, Japan

TEL. 81-3-3516-2620

Nikko MiRun Inc.

4F, Koami-cho Nikko Building,
9-2, Nihonbashi Koami-cho, Chuo-ku, Tokyo, 103-0016, Japan